

ONLINE AUCTION



Facility Closure, Leading Manufacturer/
Rebuilder of Oil & Water Drilling Rotary Tables

SALE CLOSING

Wednesday, November 5, at 10 AM CT

ASSET LOCATION

919 Highway 64 West
Henderson, TX 75653

INSPECTION

Tuesday, November 4, from 9 AM to
5 PM CT, by appointment only

**PRE-AUCTION
OFFERS INVITED
ON MAJOR ASSETS**

COMPLETE CATALOG & INFORMATION:

<https://perfection.global/hacker>

FEATURING: 2010 5" MILLTRONICS CNC HORIZONTAL BORING MILL, (2) NEW AS 2011 MAZAK POWERMASTER CNC LATHES, (3) LODGE & SHIPLEY ENGINE LATHES, RYAZAN 40" X 53" LARGE BORE ENGINE LATHE, SCHIESS 48" VERTICAL TURRET LATHE, MACHINE TOOLS, FACTORY SUPPORT EQUIPMENT, FORKLIFTS, NEW & REBUILT DRILL DECK ROTARY TABLES, DRILLING KELLYS, AND MORE.



MILLTRONICS HMC70 HORIZONTAL BORING MILL



PETTIBONE DA180 DIESEL FORKLIFT



**PERFECTION
Industrial Sales**

Alec Story, Texas Auctioneer License #18559

Perfection Industrial Sales
ph +1-847-545-6374 • fax +1-847-427-8884
www.perfectionindustrial.com

Bidding Available Through
BidSpotter

HORIZONTAL BORING MILLS, LATHES

HORIZONTAL BORING MILLS

2010 MILLTRONICS HMC70 HORIZONTAL BORING MILL, s/n 11066, w/ Fanuc 18i-MB Control, 59" x 47" Table, 86" X, 63" Y, 61" Z, 20" W, 1 Degree Indexing B-Axis Rotation, 11,000 lb. Table Capacity, 60-ATC, CAT 50 Spindle Taper, 3000 Max. RPM, Coolant Through Spindle, Chip Conveyor, Upgrade Software for Conical Interpolation

GIDDING & LEWIS 4" HORIZONTAL BORING MILL, s/n na, 48" x 74" Table, Morse Taper, 10-1300 RPM Spindle, Pendant Control



GIDDING & LEWIS 4" HBM



MILLTRONICS HMC70 HORIZONTAL BORING MILL

LATHES

2011 MAZAK POWERMASTER N UNIVERSAL FLATBED CNC LATHE, s/n 228630, w/ Mazatrol 640T Control, (2) 24" 4-Jaw Chucks, 120" Centers, 10" Through Hole, 8-Position & 6-Position Turrets, Tailstock, Steady Rest, Chip Conveyor

MAZAK POWERMASTER N UNIVERSAL FLATBED CNC LATHE, s/n 188239, w/ Mazatrol T-Plus Control, (2) 24" 4-Jaw Chucks, 80" Centers, 10" Through Hole, 8-Position & 4-Position Turrets, Chip Conveyor

LODGE & SHIPLEY 20" STANDARD LATHE, s/n 42666, 24" Swing x 100" Centers, 18" 4-Jaw Chuck, 2" Through Hole, 14-1160 RPM Spindle, Quick Change Tool Post, (2) Steady Rests

LODGE & SHIPLEY RXE-2516 POWERTURN LATHE, s/n 50880, 20" Swing x 96" Centers, (2) 21" 4-Jaw Chucks, 9" Through Hole, Quick Change Tool Post, Tailstock, Steady Rest

LODGE & SHIPLEY 3220 SUPERTURN LATHE, s/n 45103, 28" 4-Jaw Chuck, 26" Swing x 72" Centers, 2.5" Through Hole, Taper, Quick Change Tool Post

RYAZAN 3 LATHE, s/n 28601, 39" 4-Jaw Chuck, 5" Through Hole, 5-500 RPM Spindle, Newall C80 2-Axis DRO, Tailstock, 4-Way Tool Post



MAZAK POWERMASTER N UNIVERSAL FLATBED CNC LATHE



MAZAK POWERMASTER N UNIVERSAL FLATBED CNC LATHE

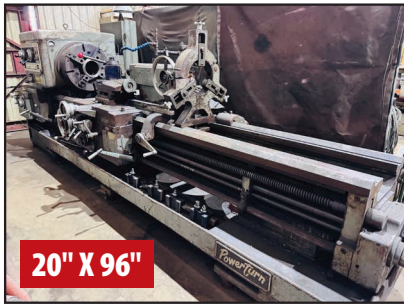


LODGE & SHIPLEY 20" STANDARD LATHE

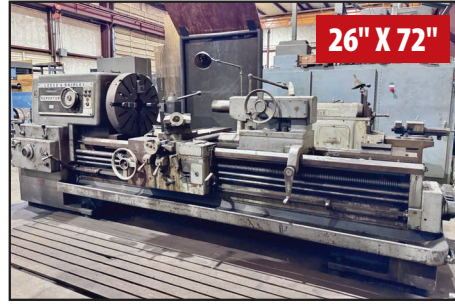
**PRE-AUCTION
OFFERS
INVITED
ON
MAJOR
ASSETS**

24" X 100"

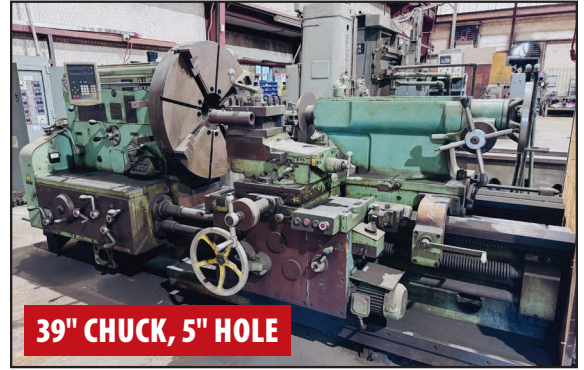
LATHES, MISC. MACHINERY



LODGE & SHIPLEY RXE-2516 POWERTURN LATHE



LODGE & SHIPLEY 3220 SUPERTURN LATHE



RYAZAN 3 LATHE

MISC. MACHINERY

BRIDGEPORT SERIES I MILLING MACHINE, s/n BR147401, 9" x 42" Power Feed Table, 90-4200 RPM Spindle

AMERICAN 4' X 11" RADIAL ARM DRILL, s/n na, 45-2250 RPM Spindle, 15 HP, 16" x 22" Table

SCHIESS 48" VERTICAL TURRET LATHE, s/n na, 49" 4-Jaw Chuck, 68" Swing, 48" Under Turret, 10-200 RPM Spindle, Newall DP 700 DRO, 60 HP

HEM H110M HORIZONTAL BAND SAW, s/n 251989, 5 HP

CINCINNATI #4 UNIVERSAL MILLING MACHINE, s/n 3J4P1755, 18" x 80" Table, 16-1600 RPM Spindle

KEARNEY & TRECKER MILWAUKEE MODEL H NO. 3 PLAIN MILLING MACHINE, s/n 3144, 13.5" x 64" Table, 20-1000 RPM Spindle

GOULD & EBERHARDT 20" INDUSTRIAL SHAPER, s/n na, 5 HP

ALSO: KALAMAZOO K10 Chop Saw, 3 HP; **SEARS/CRAFTSMAN 113244501 10" Band Saw**, s/n 9308110022, 1725 RPM Spindle, Single Phase, 1/3 HP, 45° Table Tilt; **TOLEDO 2" Pipe Threader**; **JET JBG-8A Pedestal Grinder**, s/n 3091099, 1 HP, 3450 RPM Spindle; **BALDOR 500 Pedestal Grinder**, s/n F1187, 1/2 HP, 3600 RPM Spindle; **SX INTERNATIONAL SF-5 Drill Press**, s/n na, 5/8" Drill Chuck, 6.5" Throat, 12" Dia Table, 1/2 HP; **CAT 50 Tool Holders**; Angle Plates; Machine Vises; Large Assortment of Lathe Chucks; Dividing Heads; Quick Change Tool Posts; Carbide and High-Speed Inserts; End Mills; Drills; Reamers; Taps; Centers; Steady Rests & More



BRIDGEPORT SERIES I MILLING MACHINE



AMERICAN 4' X 11" RADIAL ARM DRILL



SCHIESS 48" VERTICAL TURRET LATHE



HEM H110M HORIZONTAL BAND SAW



CINCINNATI #4 UNIVERSAL MILLING MACHINE



KEARNEY & TRECKER MILWAUKEE MODEL H NO. 3 PLAIN MILLING MACHINE

WELDING, INSPECTION, FORKLIFTS, DRILLING EQUIPMENT

WELDING

MILLER DIMENSION 452 MIG WELDER, s/n ME050034C, w/ Miller 70 Series Wire Feed

MILLER CP-300 MIG WELDER, s/n KB120912, w/ Miller Wire Feed

MILLER DIALARC 250 TIG WELDER, s/n JH194616

WELDPLUS WPI-2000 TURNING ROLLS, 2000 lb. Capacity

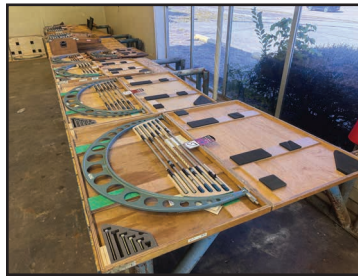
ALSO: PHOENIX DryRod 300 16C Electrode Stabilizing Oven; Welding Wire Spools; Welding Rod; Torches; Tips; Ground Clamps; and Welding Masks; Torch Cart; Clamping; Abrasives & More



ASSORTED WELDING EQUIPMENT

INSPECTION

LARGE OFFERING OF MITUTOYO Outside Micrometers & Sets up to 36", Digital and Vernier Calipers, External and Internal Thread Taper Gages, Dial Bore Gages, Depth Mics, Inside Mics, Master RED Ring Gages, Parallel Sets, Cylinder Bore Gages, Granite Surface Plates and More



O.D. MICROMETERS, UP TO 36"



O.D. MICROMETERS, UP TO 600MM



CYLINDER BORE GAGES



RING & PLUG GAGES

FORKLIFTS

PETTIBONE DA180 DIESEL FORKLIFT, s/n 6181004, 18000 lb. Capacity, Detroit 453 Engine, 96" Fork Length, 2,136 Hours

DOOSAN G355-2 LP FORKLIFT, s/n G2-00205, 7400 lb. Capacity, 96" Forks, 10° Back-Tilt, Pneumatic Tires, Dually Front Tires, 6,692 Hours

TOYOTA 8FGCSU20 LP FORKLIFT, s/n 11607, 3450 lb. Capacity, 189" Lift, Side Shift, Solid Tires, (Located in Huntsville, TX)

TOYOTA 7FGCSU20 LP FORKLIFT, s/n 64353, 3450 lb Capacity, 189" Lift, Side Shift, Solid Tires, (Located in Huntsville, TX)

ALSO: Lifting Chains; Nylon Straps & Slings; Eye Bolts; Shackles; U-Hooks; Hydraulic Jacks & More



DOOSAN G355-2 LP FORKLIFT



TOYOTA 3,450 LB LP FORKLIFT

DRILLING EQUIPMENT

(2) NEW HACKER HTD-375 ROTARY TABLES, 37-1/2" Opening, 3.56:1 Gear Ratio, 650 Ton Static Load Capacity, Hagglunds Hydraulic CA50 Drive, Without Master Bushing

NATIONAL C-275 ROTARY TABLE (USED-REBUILT), 27-1/2" Opening, 3.16:1 Gear Ratio, 53-1/4" Quill, 500 Ton Static Load Capacity, Without Master Bushing



(2) HACKER HTD-375 ROTARY TABLES



NATIONAL C-75 & HACKER HS-275 ROTARY TABLES

DRILLING EQUIPMENT

DRILLING EQUIPMENT (CON'T)

NEW HACKER HT-175S ROTARY TABLE, 17-1/2" Opening, 3.58:1 Gear Ratio, 44" Quill, 270 Ton Static Load Capacity, Without Master Bushing

NEW HACKER HS-275 ROTARY TABLE, 27-1/2" Opening, 3.68:1 Gear Ratio, 53-1/4" Quill, 500 Ton Static Capacity, Without Master Bushing

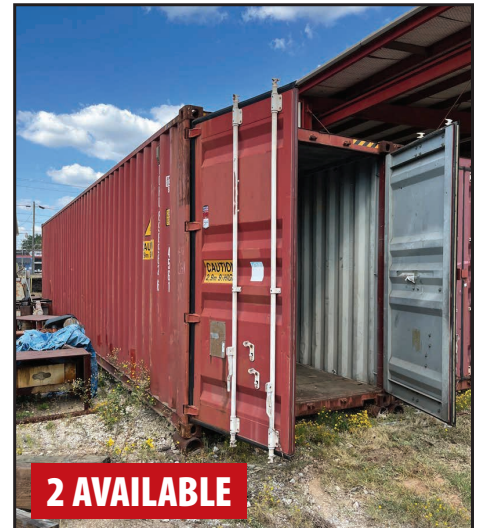
SJ-ZP-175 ROTARY TABLE (USED), 17-1/2" Opening, 3.58:1 Gear Ratio, 44" Quill, 270 Ton Static Load Capacity

LARGE SELECTION OF ROTARY TABLE SPARE PARTS Including: Skids, Base Covers, Base Spindles, Upthrust Nuts, Quills, Quill Stabilizers, Ring and Pinion Gear Sets, Pinion Bearings, Main Bearings, Master Bushings, Insert Bowls, (20+) Drilling Kellys, S-135 Forged Steel Directional Drill Pipe, Pipe Racks, and More



20+ AVAILABLE

DRILLING KELLYS



2 AVAILABLE

40' X 8' X 9'6" SHIPPING CONTAINER



HACKER HT-175S ROTARY TABLE



ASSORTED MASTER BUSHINGS & INSERT BOWLS



S-135 FORGED STEEL DIRECTIONAL DRILL PIPES

For auction inquiries, please contact Jennifer Reiner at (847) 545-6374 or jennifer@perfectionindustrial.com



Bidding Available Through
BidSpotter

View our current auction schedule at www.perfectionindustrial.com

SALE CLOSING

Wednesday, November 5, at 10 AM CT

ASSET LOCATION

919 Highway 64 West
Henderson, TX 75653

INSPECTION

Tuesday, November 4, from 9 AM to 5 PM CT, by appointment only

REMOVAL

All small items must be removed by Wednesday, November 12. All other items must be removed by Friday, November 21. All removal is strictly on an appointment only basis. Anyone removing purchased items with a lift truck or another powered vehicle must have a certificate of insurance with a \$2M General Liability policy, the policy must include a Worker's Compensation rider, and that certificate of insurance must be provided to the auctioneer for review and approval prior to the auction.

TERMS OF SALE

An 18% Buyer's Premium will be charged on all assets purchased by buyers providing full payment is made within 48 hours following the sale. Acceptable forms of payment are cashier's check, company check (with bank letter of guarantee) or wire transfer within 48 hours of the sale close. For any Buyers failing to pay within the 48 hour stated payment period, the Buyer's Premium will be increased to 20%. All invoices paid with a credit card are subject to a 20% Buyer's Premium, and credit card payments are only allowed up to a maximum of \$2,000 per auction. Everything will be sold to the highest bidder, in accordance with the Auctioneer's customary "Terms of Sale", copies of which will be posted on the Auctioneer's website and subject to additional terms announced the day of sale. All items are sold "As is, Where is" without any warranty, express or implied.

FURTHER INFORMATION

For auction inquiries, please contact Jennifer Reiner at (847) 545-6374 or jennifer@perfectionindustrial.com.

AUCTION LICENSE

Alec Story, Texas Auctioneer License #18559

To discuss your requirements for an auction, please call Perfection Industrial +1-847-545-6374