

2-DAY ONLINE AUCTION

Surplus to Continuing
Operations of



A Multinational HVAC &
Building Systems Manufacturer

DAY 1

Tuesday
March 3
10 AM ET

ASSET LOCATION

412 Railroad Avenue
Federalsburg, MD 21632

INSPECTION

Monday, March 2, from 9 AM
to 5 PM ET, or by appointment

DAY 2

Wednesday
March 4
11 AM ET

**PRE-AUCTION
OFFERS INVITED
ON MAJOR ASSETS**

COMPLETE CATALOG & INFORMATION:

<https://perfection.global/jc>

FEATURING 1,000+ LOTS! DAY 1: NEW 2023 DAVI MCB 130 4-ROLL PLATE ROLL, 35-TON MARINE TRAVELIFT STRADDLE CARRIER, 2012 MARVEL & 2023 HYD-MECH BAND SAWS, 2016 KOIKE-ARONSON PLASMA CUTTER, BLAST CONTROL PRESSURE TEST BOOTH, PANDJIRIS SUBARC WELD MANIPULATOR, 70+ LINCOLN & MILLER WELDERS INCL. NEW, NEVER USED UNITS, TANK TURNING ROLLS, WELD POSITIONERS, BRIDGE CRANES UP TO 25 TON, MACHINE TOOLS, FORKLIFTS, FACTORY SUPPORT EQUIPMENT; DAY 2: LARGE-QUANTITY OEM & MRO INVENTORY INCLUDING ELECTRICAL, WIRE & CABLE, MOTORS, COMPRESSORS, PUMPS, VALVES, HVAC COMPONENTS, RAW MATERIALS, AND SKID-MOUNTED INDUSTRIAL PROCESS COOLING SYSTEM



NEW NEVER USED

DAVI MCB 130 4-ROLL 10' PLATE BENDING ROLL



MARINE TRAVELIFT 35BFMII 35 TON STRADDLE CARRIER



Perfection Industrial Sales
ph +1-847-545-6374 • fax +1-847-427-8884
www.perfectionindustrial.com

In
conjunction
with:



DAY 1 | ONLINE AUCTION

SALE CLOSING:

Tuesday, March 3 • 10 AM ET

PLATE BENDING ROLL

2023 DAVI MCB 130 4-ROLL 10' PLATE BENDING ROLL, s/n 22340181, w/ iRoll CNC Control, 18.2" Top Roll, 16.6" Bottom Roll, 14.2" Side Rolls, 72 HP Power, High Resistance, Heat Treated Rolls, Overhead Plate Support, Side Support, 25' Power In-Feed Rollers, **NOTE: MFG. DATE 07/2023, INSTALLED NEW Q3 2025 - NEVER USED**

STRADDLE CARRIER

MARINE TRAVELIFT 35BFMII 35 TON STRADDLE CARRIER, s/n 2128-487, w/ FORD 300 Cubic Inch 6-Cylinder Gas Engine, 18'6" Wheelbase, 17' Inside Clear Width, 20' Inside Clear Height, 22' Overall Height

PRESSURE TEST BLAST BOOTH

2023 BLAST CONTROL SYSTEMS PRESSURE PRO PRESSURE TEST BLAST BOOTH, w/ 45' Long x 14' Wide x 15' Tall, Double Door, Pneumatic Pressure Testing up to 1,910 PSI

PLASMA CUTTING TABLE

2016 KOIKE PLATE-PRO EXTREME 8' X 12' CNC PLASMA CUTTING TABLE, s/n 0416051750, w/ HYPER THERM EDGE-PRO Control, HYPER THERM HPR260XD HyDefinition Plasma Power Source, Floor Mounted Power Track, 8' x 12' Water Table

OVER 70 WELDERS & SUPPORT EQUIPMENT

MOST WELDERS NEW 2023 - CHECK LOT CATALOG FOR DETAILS AND SERIAL NUMBERS

ORBITALUM 180SW SMART ORBITAL WELD SYSTEM

(2) LINCOLN PIPEFAB MULTI-PROCESS WELDERS, w/ DUAL PIPEFAB Wire Feed

(8) LINCOLN FLEXTEC 650X MULTI-PROCESS WELDERS, (2) w/ 74HT FLEX Feeds, (3) w/ LN-9 Wire Feeds, (3) NEW IN BOX

(4) NEW LINCOLN POWERWAVE 300C MULTI-PROCESS WELDERS

(2) LINCOLN IDEALARC DC600 MIG WELDERS, w/ LN-9 Wire Feed

MILLER DIMENSION NT450 MIG WELDER, w/ 70 SERIES Wire Feed

(4) LINCOLN CV- 400 MIG WELDERS

LINCOLN DC- 400 MULTI-PROCESS WELDER

(4) LINCOLN S350 POWER WAVE MULTI-PROCESS WELDERS, (3) w/ 84 DUAL Wire Feed, (1) w/ No 84 Wire Feed

(7) LINCOLN FLEXTEC 350X MULTI-PROCESS WELDERS, w/ 84 POWER FEED Wire Feeds

(5) MILLER XMT 350 CC/CV MULTI-PROCESS WELDERS, w/ 22A 24V Wire Feeds, MILLER Process Control Selectors

LINCOLN 350MP MIG WELDER

MILLER MILLERMATIC 300 MIG WELDER

MILLER MILLERMATIC 252 MIG WELDER

(3) LINCOLN ASPECT 375 AC/DC TIG WELDERS



ORBITALUM 180SW SMART ORBITAL WELD SYSTEM



(8) LINCOLN FLEXTEC 650X MULTI-PROCESS WELDERS



BCS PRESSURE PRO PRESSURE TEST BLAST BOOTH



KOIKE PLATE-PRO EXTREME 8' X 12' CNC PLASMA CUTTING TABLE

2023

2016

OVER 70 WELDERS & SUPPORT EQUIPMENT

OVER 70 WELDERS & SUPPORT EQUIPMENT (CON'T)

MOST WELDERS NEW 2023 – CHECK LOT CATALOG FOR DETAILS AND SERIAL NUMBERS

(21) MILLER MULTIMATIC 255 MULTI-PROCESS TIG/STICK WELDERS

(2) MILLER MAXSTAR 210 TIG WELDERS

(3) MILLER SYNCROWAVE 210 TIG WELDERS - (2) NEW
MILLER IDEALARC 250 ARC WELDER

MILLER BOBCAT 250 EFI WELDER GENERATOR

(2) LINCOLN SUB-ARC FEEDERS, w/ 74 HT Wire Feeds

(7) HYPERTHERM POWERMAX 105, 85 & 65 PLASMA CUTTERS

(11) LINCOLN PRISM MOBILE FUME EXTRACTORS

(4) DGP PIRANHA III TUNGSTEN ELECTRODE GRINDERS

ALSO: WALTER SurFox 606 Weld Cleaners, Beetle Torches & Tracks, Oxy-Ace Torch Caddies & Gauges, RIDGID Tri-Stands, DryRod Electrode Ovens



MILLER SYNCROWAVE 210 TIG WELDERS (2) NEW



70+ AVAILABLE

GENERAL VIEW OF WELDERS



70+ AVAILABLE

GENERAL VIEW OF WELDERS



(4) NEW LINCOLN POWERWAVE 300C MULTI-PROCESS WELDERS



70+ AVAILABLE

GENERAL VIEW OF WELDERS



7 AVAILABLE

HYPERTHERM POWERMAX 105, 85 & 65 PLASMA CUTTERS



11 AVAILABLE

LINCOLN PRISM MOBILE FUME EXTRACTORS

**PRE-AUCTION
OFFERS INVITED
ON MAJOR ASSETS**

Bidding Available Through
BidSpotter

For auction inquiries, please contact Jennifer Reiner at
(847) 545-6374 or jennifer@perfectionindustrial.com

WELDING MANIPULATOR, TANK TURNING ROLLS, WELD POSITIONERS

WELDING MANIPULATOR, TANK TURNING ROLLS, WELD POSITIONERS

PANDJIRIS 1400 SUB ARC WELDING MANIPULATOR, s/n 19044X02-1, w/ LINCOLN DC1000 Power Supply, LINCOLN NA-5 Wire Feed, WELD ENG. PS-5000-R Heavy Duty Flux Recovery System

PRESTON EASTIN TISA60HD 30 TON TANK TURNING ROLL SET, s/n 386, 385

PANDJIRIS MM-30 30 TON TANK TURNING ROLL SET

WELDWIRE WWRD-20ST 20 TON TANK TURNING ROLL SET, s/n 182702, 182701

WEBB T18 10,000 LB. TANK TURNING ROLL SET, s/n 2018-060

(2) **PANDJIRIS PIPER 3 4,000 LB. TANK TURNING TOLL SETS**

(2) **WEBB S165 6,000 LB. TANK TURNING ROLL SETS**

(8) **WEBB T6 3,000 LB. TANK TURNING ROLL SETS**

KOIKE ARONSON PRD3 3,000 LB. TANK TURNING ROLL SET, s/n 93600

STINGER P-2000 2,000 LB. WELD POSITIONER

(9) **BAILEIGH WP-450 BENCH TOP WELD POSITIONERS**

ALSO: Large Selection of **LINCOLN, PANDJIRIS** Power & Idler Tank Turning Rolls



BAILEIGH WP-450 BENCH TOP WELD POSITIONERS



PANDJIRIS 1400 SUB ARC WELDING MANIPULATOR



STINGER P-2000 2,000 LB. WELD POSITIONER



WELDWIRE WWRD-20ST TANK TURNING ROLL SET



VIEW OF WEBB TANK TURNING ROLLS

DAY 1
ONLINE AUCTION
Tuesday, March 3
10 AM ET

BAND SAWS, MACHINE TOOLS

BAND SAWS

2023 HYD-MECH S23A AUTOMATIC HORIZONTAL BAND SAW, s/n 10000000000429, w/ EVOLUTION TS50 PLC Control, 16" x 20" Capacity, 16" x 14" at 45°, 1.25" Blade, 8.8 HP Blade Drive, 75-350 SFPM, Bundle Clamp 28.5" Ball Screw Shuttle Feed, Integrated Roller Feed Table

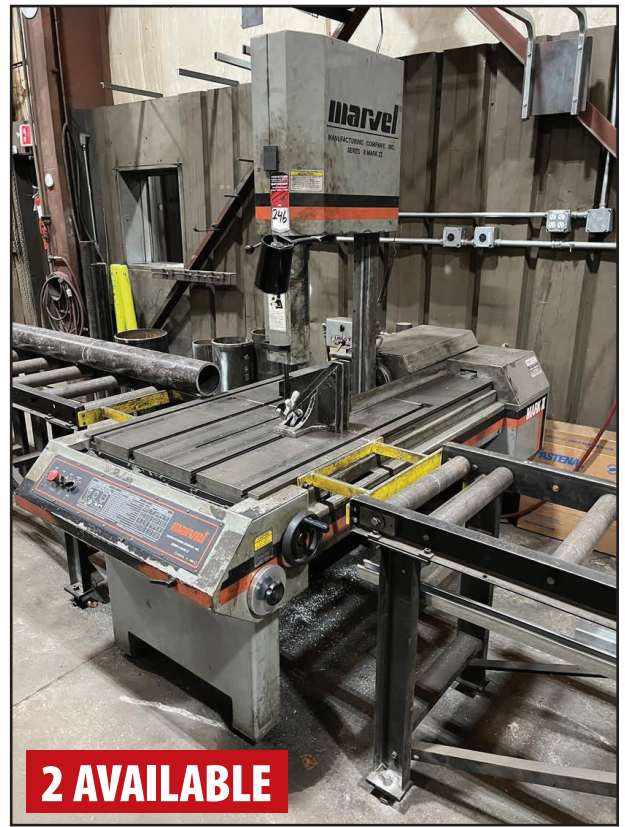
(2) NEW AS 2012 MARVEL SERIES 8 MARK II TILT FRAME VERTICAL BAND SAWS, s/n 830984, 829717, w/ 18" x 22", 50 – 450 FPM Blade Speeds, 5 HP Blade Drive, Coolant, 1" Blade, Roller Conveyor

DAYTON 3Z360G HORIZONTAL BAND SAW, s/n KM28803



2023

HYD-MECH S23A AUTOMATIC HORIZONTAL BAND SAW



2 AVAILABLE

MARVEL SERIES 8 MARK II TILT FRAME VERTICAL BAND SAW

MACHINE TOOLS

2015 SUMMIT SMART CUT SC20-3X52 CNC LATHE, s/n 786686, w/ FAGOR Control, 12" 3-Jaw Chuck

2013 SHARP 2680B 26" X 80" GAP BED LATHE, s/n 2004237, w/ 19.5" 3-Jaw Chuck, 4.5" Spindle Bore, ALORIS Quick Change Tool Post, Tailstock, 10-1000 RPM, ACU-RITE 2-Axis DRO

SHARP 2680C 26" X 80" GAP BED LATHE, s/n na, w/ 15.5" 4-Jaw Chuck, 3.25" Spindle Bore, Quick Change Tool Post, Tailstock, Steady Rest, 15-1000 RPM, ACU-RITE 2-Axis DRO

VICTOR 2080B 20" X 80" GAP BED LATHE, s/n 710652, w/ 8" 3-Jaw Chuck, Quick Change Tool Post, Tailstock, Steady Rest, 30-1800 RPM

(2) MICROWEILY TY-1630S 16" X 30" LATHES, s/n A2304-005, A9304-009, w/ 10" 3-Jaw Chuck / 12" 4-Jaw Chuck, ALORIS Quick Change Tool Post, Tailstock, Steady Rest, 55-2000 RPM, HEIDENHAIN 2-Axis DRO

MONARCH 18.5" X 78" LATHE, s/n 30817, w/ 15.5" 4-Jaw Chuck, Quick Change Tool Post, Tailstock, 19-800 RPM

2013 SHARP TMV-DVS 3 HP VERTICAL MILL, s/n 20403948, w/ 10" x 50" 2-Axis Power Feed Table, ACU-RITE 3-Axis DRO, Power Drawbar

LAGUN FTV 1 3 HP VERTICAL MILL, s/n 39202, w/ 10" x 44" Power Feed Table, ACU-RITE 2-Axis DRO, 4200 Max RPM

FIRST LC-11/2VS 2 HP VERTICAL MILL, s/n 30528308, w/ 9" x 42" Power Feed Table, 60-4500 RPM, HEIDENHAIN 2-Axis DRO

LAGUN FTV-1 2 HP VERTICAL MILL, s/n SE-1363, w/ 9" x 42" Power Feed Table, 55-2540 RPM, Accu-Rite 2 Axis DRO

FADAL VMC 2216 VERTICAL MACHINING CENTER, s/n 9509785, w/ 88HS Control, 16" x 36" Table, 20-ATC, CAT 40 Spindle Taper

FADAL VMC 40 VERTICAL MACHINING CENTER, s/n 8912798, w/ 88 HS Control, 16" x 36" Table, 20-ATC, CAT 40 Spindle Taper



2015

SUMMIT SMART CUT SC20-3X52 CNC LATHE



2013

SHARP 2680B 26" X 80" GAP BED LATHE



2013

SHARP TMV-DVS 3 HP VERTICAL MILL

MISCELLANEOUS MACHINERY, BRIDGE CRANES

MISCELLANEOUS MACHINERY

(2) 2017 & 2003 ERCOLINA TOP 030TRIF ROTARY DRAW TUBE BENDERS, s/n 30301563017095, Assorted Bender Tooling Sold Separately

DRC NO. 602 BALANCER, s/n 079925302

SUMMIT 3XHD GEARED HEAD DRILL, s/n 706, w/ 16.5" x 16.5" Table, 45-1115 RPM, 16" Throat, Power Quill Feed

SUMMIT 3BHD-T GEARED HEAD DRILL, s/n 585, w/ Power Quill Feed, 90-1238 RPM

(3) FEIN GI 150 BELT GRINDERS

SCOTCHMAN GHD 6DL BELT GRINDER, s/n 0451026

(2) RIDGID 1224 POWER PIPE THREADERS

(3) RIDGID B500 BEVELERS

DAKE 909250 50 TON SHOP PRESS, s/n 1373540

ALSO: CLAUSING 16VT Drill Press, s/n 512076, PALMGREN 8" Bench Grinder, WILTON 4200 6" Belt/12" Disc Sander, s/n 610060, TENNSMITH SR24 Slip Roll, s/n 08007, 20 Ga. x 24" Capacity, Belt/Disc Grinders



(2) RIDGID 1224 POWER PIPE THREADERS



DAKE 909250 SHOP PRESS



SUMMIT 3BHD-T GEARED HEAD DRILL



FEIN GI 150 BELT GRINDERS



RIDGID B500 BEVELERS

BRIDGE CRANES

(2) 2023 JAA'S CSE 10 TON TOP RUNNING, Single Girder, Free Standing Bridge Crane w/ STREET Components, Approx. 24' Span x 200' Runway, 20' Lift, STREET Electric Hoist, Radio Control, 17.1/4.3 FPM Hoist Speed, 66/6.6 FPM Trolley Speed, 10.5/105 VFD FPM Bridge Speed



DRC NO 602 BALANCER



2017 & 2003 ERCOLINA TOP 030TRIF TUBE BENDERS



2023 JAA'S 10 TON FREE STANDING CRANE SYSTEMS



2023 JAA'S 10 TON FREE STANDING CRANE SYSTEMS

BRIDGE CRANES, FACTORY SUPPORT EQUIPMENT

FACTORY SUPPORT EQUIPMENT

HYSTER S135FT 12,000 LB. LPG FORKLIFT, s/n G024V025332P, w/ 209" Max. Lift Height, Three-Stage Mast, Side Shift, 48" Fork Length, 6647 Hours

HYSTER E50Z-33 4,800 LB. ELECTRIC FORKLIFT, s/n G108N032, w/ 189" Three-Stage Mast, Side Shift, 42" Fork Length, 6569 Hours, w/ HI-TECH 3PF24B-865EMES Battery Charger

2023 INGERSOLL RAND RS 22I 30 HP VARI-SPEED AIR COMPRESSOR, s/n CBV87304, w/ 118 PSIG Max Pressure, 124 Max CFM

2012 EATON POW-R-LINE SWITCHBOARD SWITCHGEAR, w/ Magnum SBSC4N Lower Voltage AC Power Circuit Breaker, 4000 Amp Frame

M&M CARNOT PURE CHILL 62TR CHILLER SYSTEM, w/ 200 HP, R-717 Refrigerant, 58F SST Standard Suction Temperature w/ BAC PT2-0412A-2H1Cooling Tower and EVAPCO Interior Fan System, Benshaw Service Disconnect, Eaton PLC

2023 BRYAN AB150-W-FDG GAS FIRED BOILER, s/n 103280, w/ 1253 Output MBH, 30 PSIG, 184 Heating Surface Sq. Ft., 1840 Min Relief Valve Cap, PPH/MBH, 160 PSIG MAWP Water, 1500 CFH Maximum Input, 750 CFH Minimum Input

2025 3M DBI-SALA FLEXIGUARD FALL PROTECTION SYSTEM, Trailer Mounted, NEW - NEVER Used

2018 FORD FUSION, VIN 3FA6P0HD0JR144412, 59,059 Miles

GEIGER PORTABLE VACUUM PUMP SYSTEM, w/ KINNEY KTC112 Vacuum Pump

ALSO: Mag Base Drills, Machinery Skates, Retractable Hose & Electrical Reels, Work Benches, Hand Tools, Power Tools, Air Tools, Heavy Duty Bench Vises, Machine Vises, Toolboxes, **KOBALT & GREENLEE** Job Boxes, Ladders, Pallet Jacks, Welding Stands, Welding Tables, Welding Consumables, Shop Racking, Pallet Racking, Cantilever Racking, Pallet Jacks, Shop Fans, Blowers, and Much More



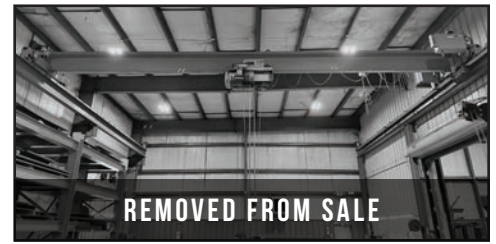
REMOVED FROM SALE

YALE/M&M DUAL BRIDGE CRANE SYSTEM



REMOVED FROM SALE

ACCO WRIGHT 10 OVERHEAD BRIDGE CRANE



REMOVED FROM SALE

P&H 10 TON OVERHEAD BRIDGE CRANE



12,000 LB.

HYSTER S135FT LPG FORKLIFT



2023

INGERSOLL RAND RS 22I 30 HP VARI-SPEED AIR COMPRESSOR



2025

3M DBI-SALA FLEXIGUARD FALL PROTECTION SYSTEM



M&M CARNOT PURE CHILL 62TR CHILLER SYSTEMS



2012

EATON POW-R-LINE SWITCHBOARD SWITCHGEAR



M&M CARNOT PURE CHILL 62TR CHILLER SYSTEM



VIEW OF POWER TOOLS



VIEW OF PIPE STANDS



JOB BOXES



GEIGER PORTABLE VACUUM PUMP SYSTEM

\$6M+ IN OEM HVAC & INDUSTRIAL MRO INVENTORY, LARGE-LOT OPPORTUNITIES

ELECTRICAL & CONTROLS

Extensive quantities of electrical and controls inventory, including conduit and flexible conduit, wire and cable, connectors, bushings, junction and terminal boxes, enclosures, breakers, relays, power supplies, transducers, output modules, fuses, sensors, switches, and related hardware. Offered largely in bulk and grouped lots.

MOTORS, COMPRESSORS & PUMPS

A strong selection of both new-in-crate and used motors, compressors, and pumps. High-value motors and compressors may be offered individually, with additional quantities grouped into bulk lots suitable for rebuild, service, or resale programs.

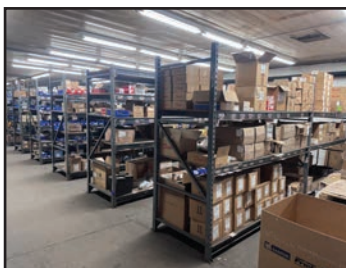
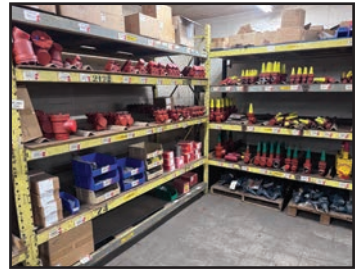
VALVES, FITTINGS & HVAC COMPONENTS

Deep inventory of industrial valves and HVAC-related components, including solenoid valves, ball and check valves, shut-off and safety valves, expansion valves, pressure regulators, strainers, strainers housings, unions, flanges, gaskets, O-rings, fasteners, clamps, and stainless and copper fittings. Many categories offered in large quantity lots.

RAW MATERIALS

Surplus raw materials and fabrication inventory including pipe, rolled and structural steel, channel, square and rectangular tube, bar stock, tank heads, large-diameter components, and related materials suitable for fabrication, repair, or resale.

DAY 2 | **ONLINE AUCTION**
SALE CLOSING:
Wednesday, March 4
11 AM ET



SKID-MOUNTED INDUSTRIAL PROCESS COOLING SYSTEM

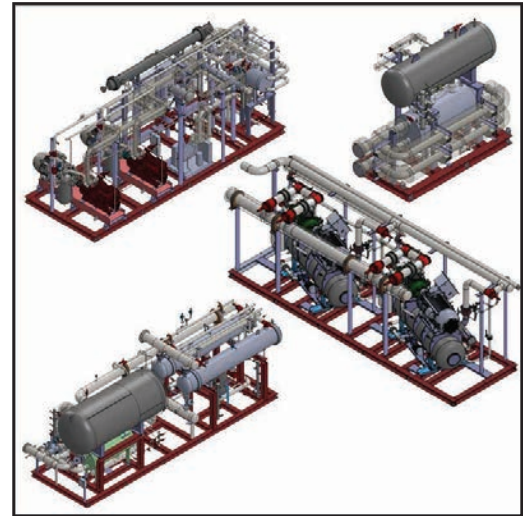
SKID-MOUNTED INDUSTRIAL PROCESS COOLING SYSTEM

Originally engineered for a large-scale industrial process application. System consists of multiple skid-mounted cooling and refrigeration modules, including chiller skids, compressor skids, surge drum / evaporator assemblies, heat exchangers, pumps, and integrated piping and controls. Designed for continuous-duty industrial operation with heavy-wall piping, stainless steel construction in critical areas, and centralized control architecture.

Includes compressors and motors, pressure vessels, heat exchangers, pumps, valves, sensors, instrumentation, and electrical and control panels mounted on structural steel skids for modular installation. Represents a rare opportunity to acquire a complete, engineered cooling system suitable for industrial cooling, process refrigeration, or redevelopment for alternate applications.

Offered at auction strictly as-is, where-is, with no warranties or representations of any kind, express or implied. Sale does not include installation, commissioning, integration, or site-specific engineering. Any required installation or integration services are the sole responsibility of the buyer and must be contracted separately.

NOTE: Documentation available for skid configurations, component details, and supporting drawings.



For auction inquiries, please contact Jennifer Reiner at
(847) 545-6374 or jennifer@perfectionindustrial.com



Bidding Available Through
BidSpotter

DAY 1

Tuesday
March 3
10 AM ET

DAY 2

Wednesday
March 4
11 AM ET

View our current auction schedule at www.perfectionindustrial.com

REMOVAL

All small items must be removed by Friday, March 6. All other items must be removed by Friday, March 20. All removal is strictly on an appointment only basis. Anyone removing purchased items with a lift truck or another powered vehicle must have a certificate of insurance with a \$2M General Liability policy, the policy must include a Worker's Compensation rider, and that certificate of insurance must be provided to the auctioneer for review and approval prior to the auction.

TERMS OF SALE

An 18% Buyer's Premium will be charged on all assets purchased by buyers providing full payment is made within 48 hours following the sale. Acceptable forms of payment are cashier's check, company check (with bank letter of guarantee) or wire transfer within 48 hours of the sale close. For any Buyers failing to pay within the 48 hour stated payment period, the Buyer's Premium will be increased to 20%. All invoices paid with a credit card are subject to a 20% Buyer's Premium, and credit card payments are only allowed up to a maximum of \$2,000 per auction. Everything will be sold to the highest bidder, in accordance with the Auctioneer's customary "Terms of Sale", copies of which will be posted on the Auctioneer's website and subject to additional terms announced the day of sale. All items are sold "As is, Where is" without any warranty, express or implied.

FURTHER INFORMATION

For auction inquiries, please contact Jennifer Reiner at (847) 545-6374 or jennifer@perfectionindustrial.com.

ASSET LOCATION

412 Railroad Avenue
Federalsburg, MD 21632

INSPECTION

Monday, March 2, from 9 AM
to 5 PM ET, or by appointment

To discuss your requirements for an auction, please call Perfection Industrial +1-847-545-6374