

ONLINE AUCTION

QTG

Quali-T Groupe – Leading Manufacturer of Structural and Mechanical Steel Tubes

SALE CLOSING

Tuesday, July 14, at 11 AM ET

ASSET LOCATION

66 Unifix Street
Bromont, QC J2L 1N6, Canada

INSPECTION

Monday, July 13, from 8:30 AM to
4:30 PM ET, or by appointment

**PRE-AUCTION
OFFERS INVITED
ON MAJOR ASSETS**

COMPLETE CATALOG & INFORMATION:

<https://perfection.global/quali-t-groupe>

**AUCTION CONDUCTED
IN U.S. FUNDS**

FEATURING OVER 500 LOTS INCLUDING: STATE-OF-THE-ART 2021 GEMA / TRIMAC POWDER COAT SYSTEM, 2021 TRIMAC STAINLESS STEEL 5-STAGE WASH, 2021 TRIMAC INFRARED DRYOFF & BAKE OVENS, 2020 TRUMPF TRULASER TUBE 5000 LASER CUTTER, 2021 HORN/HMT 3.0E-MS CNC ELECTRIC TUBE BENDER, 2021 AIDA DSF-C1-1500A 165-TON GAP FRAME SERVO PRESS, 2021 ABB TWIN ROBOT CNC ROBOTIC WELD SYSTEM, ALSO LATE MODEL BUILDPRO WELDING FIXTURE TABLES & ACCESSORIES, MIG & TIG WELDERS, FREE-STANDING BRIDGE CRANES, AND FACTORY SUPPORT EQUIPMENT



INSTALLED 2021

COMPLETE GEMA / TRIMAC POWDER COAT SYSTEM—BOOTH, 5-STAGE WASH, DRY-OFF, CURE/BAKE



2020

TRUMPF TRULASER TUBE 5000 FIBER LASER TUBE CUTTING MACHINE



**PERFECTION
Industrial Sales**

Perfection Industrial Sales

ph +1-847-545-6374 • fax +1-847-427-8884

www.perfectionindustrial.com

In conjunction with:



Complete, State-of-the-Art Powder Coating System

- Installed & Operational in 2021
- Powder Coat, 5-Stage Wash, Dry-Off, Cure
- 48" x 96" Openings
- 10 Automatic Guns + 2 Manual
- Drawings Available Upon Request

2020 GEMA SMART-10K ELECTROSTATIC POWDER COAT SYSTEM, w/ (2) 2020 GEMA Reciprocator ZA08-23 5-Gun Automatic Spray Systems w/ Gema OptiStar Guns Controls & (2) GEMA OptiMove Axis Controls, (2) GEMA OptiFlex Manual Guns w/ OptiStar CG13 Gun Controls, Reclaim System w/ (2) 12-Cartridge Filters, Powder Hopper, Thermal Wrap System, NEW - Never Used 12-Cartridge Filter Included

ENVIRONMENTAL ROOM – APPROX. 30'8" W X 18' H X 30'8" L, Smooth White Steel/Foam/ Steel Tongue & Groove Panel, R-119 Encapsulated Insulation, Hi-Bay Lights, 10' x 10' Garage Door, (2) Man Doors

2021 TRIMAC INDUSTRIAL SYSTEMS KEMAC STAINLESS STEEL 5-STAGE WASH, s/n QG-0720-6859-W, w/ Stainless Steel Tanks & Tunnel, 8' Drain Backs, 6 FPM Line Speed, (2) Head Stages, Coalescer. **Stage I:** Wash - 80 Seconds, 8' Length, 1476 Gallon Tank, 140°F, 2.8 GPM Nozzles, (9) Risers, 172 Nozzles, 482 GPM Pump, 15 HP. **Stage II:** Rinse - 5' Length, 50 Seconds, 950 Gallon Tank, Ambient, Drain - 8' Length, 80 Seconds. **Stage III:** Phos - 5' Length, 950 Gallon Tank, 50 Seconds, 120°F. **Stage IV:** Rinse - 5' Length, 950 Gallon Tank, 5 Seconds. **Stage V:** Rinse - 5' Length, 950 Gallon Tank, 50 Seconds, Ambient, Exit Drain - 8' Length, 80 Seconds. Stages 2-5: 2.8 GPM Nozzles, (6) Risers Each Stage, (114) Nozzles Each Stage, 319 GPM Pumps, 10 HP Motors, (2) 30" 6600 CFM Exhaust Fans, 13'6"H x 9'6"W x 76'L Overall Wash System Dimensions

2021 TRIMAC INDUSTRIAL SYSTEMS GAS CAT DRY INFRARED DRY-OFF OVEN, s/n QC-0720-6859-D, w/ Thermal Wrap System w/ 3500 CFM High Temp. Recirculation w/ Adjustable Controls, Variable Speed Motor Control for Air Volume, High Reflective Aluminum Insulated Panel Construction, (16) 24" x 72" Gas Cat Catalytic Heating Units @ 72,000 BTU/hr Each, 192 Sq/ Ft. Catalytic Surface Area - Total of 1,152,000 BTU/ Hr, 48" x 96" Opening, 8" x 18"H Hook Slot, 2.5 Minute Heated Process Time, 6 FPM Line Speed, (2) 1500 CFM Exhaust Fans, (2) 2500 CFM Recirculation Fans, 12'H x 7'2"W x 27'L Overall Dimensions

2021 TRIMAC INDUSTRIAL SYSTEMS GAS CAT CURE INFRARED CURE/BAKE OVEN, s/n QC-0720-6859-C, w/ Thermal Wrap System w/ 5000 CFM High Temp. Recirculation w/ Adjustable Controls, Variable Speed Motor Control for Air Volume, (32) 24" x 72" Trimac Flamless Gas Cat Catalytic Heating Units @ 72,000 BTU/hr Each, 384 Sq. ft. Catalytic Surface Area- Total of 2,304,000 BTU/Hr. 4-Zone, 576,000 BTU/Hr Per Zone w/ (8) Emitters/Zone, 5 Minute Heated Process Time, 6 FPM Line Speed, (2) 1500 CFM Exhaust Fans, (2) 2500 CFM Recirculation Fans, High Reflective Aluminum Insulated Panel Construction, 48" x 96" Opening, 8" x 18"H Hook Slot, 12'H x 7'2"W x 42'L Overall Dimensions

CONVEYOR SYSTEM – VARIABLE SPEED 350' ENCLOSED TRACK MONORAIL, w/ 125 Lbs. Max Weight/Hanger Point @ 8" Centers



2 INCLUDED

2020 GEMA 5 GUN AUTO SPRAY UNITS



GEMA OPTISTAR GUN CONTROLS



GEMA RECLAIM SYSTEM



GEMA FILTER

STATE-OF-THE-ART 48" X 96" POWDER COAT SYSTEM, FIBER TUBE LASER



ENVIRONMENTAL ROOM



2021

TRIMAC KEMAC STAINLESS STEEL 5-STAGE WASH



NEW - NEVER USED

GEMA EXTRA FILTER



2021

TRIMAC GAS CAT DRY INFRARED DRY-OFF OVEN



2021

TRIMAC GAS CAT CURE INFRARED CURE/BAKE OVEN

FIBER TUBE LASER

2020 TRUMPF TRULASER TUBE 5000 FIBER LASER TUBE CUTTING MACHINE, s/n A1440D0237, w/ TruDisk 3001 3000W Solid State Laser, Siemens Operator Control, 6" Round Tube Capacity, 6"/6.7" Rectangular Tube Max. Side Length / Outer Circle Diameter, 0.375" Max Wall Thickness (Mild Steel), Technology Package (Bevel / Rapid Cut), Weld Seam Detection Inner and Outer, Adaptive Clamping System for Angles, Channels and Flats, LoadMaster Tube 26' w/ Bundle Support, 312" Max. Material Length for Automatic Loading, 21' Flexible Part Removal Station w/ Scrap Conveyor, CAMFIL MF-L Dust Collector, REIDEL RL 17/0 TR.05 Chiller, 28,297 Operating Hours, 14,776 Laser On Hours



2020

TRUMPF TRULASER TUBE 5000 FIBER LASER TUBE CUTTING MACHINE



VIEW OF OPEN GUARD



VIEW OF TRUMPF LOADER

TUBE BENDER & ASSOCIATED MACHINERY, PRESSES

TUBE BENDER & ASSOCIATED MACHINERY

2021 HORN MACHINE TOOLS 3" 3.0ECNC-MS ALL ELECTRIC MULTI-STACK CNC TUBE BENDER, s/n 21L351097B, w/ BendPro G2 Control

BEWO RCH 90M AUTOMATIC TUBE CUT-OFF, s/n 2011337, w/ DB70NP Tube End Deburrer, Tube Infeed/Outfeed System

2011 BRUSA & GARBOLI LT 130 ABRASIVE BELT ORBITAL GRINDER, s/n A46015

2015 BAILEIGH/RUSCH M325 PROGRAMMABLE ROTARY DRAW BENDER, s/n 140-00157, Offered Separately: Large Selection of Bending Dies

(2) 2023 ZHANGJIAGANG CEDAR XS-80Y CHAMFER MACHINES, s/n 23011015H, na



BEWO RCH 90M AUTOMATIC TUBE CUT-OFF



HORN 3.0ECNC-MS ALL ELECTRIC MULTI-STACK CNC TUBE BENDER



DB70NP TUBE END DEBURRER

PRESSES

2021 AIDA DSF-C1-1500A 165 TON SERVO GAP FRAME PRESS, s/n CV415-0032, w/ AB PanelView PLUS Control, 46.1" x 29.9" Bed, 15.75" Shut Height, 7.87" Stroke, 3.94" Adjustment, Max. 60 SPM. Offered Separately: TigerStop Programmable Push Feed Rail System

NIAGARA B4 1/2 - 42 106 TON GAP FRAME PRESS, s/n 33856, w/ 42" x 22" Bed, 4" Stroke, 15.75" Shut Height, 3.375" Adjustment

MINSTER NO. 5 45 TON OBI PRESS, s/n 5-2883, 2-3/4" Slide Adjustment, 19.5" x 28" Bed, 8" x 10" Ram

BROWN & BOGGS 15L 40 TON OBI PRESS, s/n na, 28.5" x 18.5" Bed, 9" x 12" Ram

E.W. BLISS NO. 2 OPEN BACK INCLINABLE GAP FRAME PRESS, s/n na, 13" x 21" Bed



AIDA SERVO GAP FRAME PRESS



2015 BAILEIGH/RUSCH M325 PROGRAMMABLE ROTARY DRAW BENDER



2011 BRUSA & GARBOLI LT 130 ABRASIVE BELT ORB. GRINDER



BENDER TOOLING



2023 ZHANGJIAGANG CEDAR XS-80Y CHAMFER MACHINE

WELDING DEPARTMENT

WELDING DEPARTMENT

2021 ABB TWIN ROBOT MIG WELDING CELL, w/ (2) ABB IRB 2600ID-8/2.00 Weld Robots w/ IRC5 Controls, Pendant, (2) LINCOLN POWERWAVE R450 MIG Welders w/ 4R-220 Auto Drive Wire Feeds, ABB IRBP K-600 Twin Station Ferris Wheel Welding Positioner, ABICOR BINZEL Torch Cleaning Station

(8) LINCOLN FLEXTEC 350X MIG WELDERS, s/n U1201105189, U1201101059, U1201101063, U1201101061, U1201101062, U1201105191, U1201101060, U1201102444, w/ LF-74 Wire Feed

MILLER XMT 350 CC/CV MIG WELDER, s/n NE164172U, w/ 20 Series Wire Feed

MILLER DELTAWELD 302 MIG WELDER, s/n LH2000012C, w/ 75 Series Wire Feed

LINCOLN POWERMIG 256 MIG WELDER, s/n M3140801054

CANOX REDMASTER 355 MIG WELDER, s/n KH508326, w/ C-S60 Wire Feed

MILLER GOLD STAR 400SS TIG WELDER, s/n JG133050

MILLER DYNASTY 210 TIG WELDER, s/n NC500401L

HYPERTHERM POWERMAX 85 SYNC PLASMA CUTTER, s/n 087180

WULFTEC CIRCUMFERENTIAL TWIN MIG WELD SYSTEM, w/ Dual 4" 3-Jaw Chucks, 60" Between Centers, w/ HZX VOGEN MIG-250DP Welders

(5) STRONGHAND TOOLS BUILDPRO MAX SLOTTED MODULAR WELD TABLES, s/n TM220929, TM210445, TM220928, TM210642, n/a, w/ 46" x 92" Tables, NOTE: Large Selection of BUILDPRO Fixture Components (Sold Separately)

BLUCO WELDING FIXTURES & CLAMPS

2023 CAMFIL FARR GOLD STAR GSX12SQ FUME EXTRACTION SYSTEM, s/n R38235001, 10,400 CFM, 12-Cartridge

(4) 2022 PLYMOVENT DUAL BOOM KUA-4/H FREE-STANDING FUME EXTRACTION ARMS

(2) NEW IN BOX PLYMOVENT KUA-160/4H FUME EXTRACTION ARMS

(2) 2022 PLYMOVENT MOBILE PRO PORTABLE FUME FILTERS, s/n 200057634, 200057621

STRONG HAND TOOLS TU52020 WELDING MANIPULATOR, 20" x 20" Table, 0.625" Hole Ø, 2" x 2" Grib Pattern, 110 lb. Load Capacity

(2) BUILDPRO ROTARY WELDING POSITIONERS

(3) SETS OF TURNING ROLLS

TINAN HANDA HD-10 WELDING POSITIONER, 8" Table, 2.5" 3-Jaw Chuck, 10 kg Capacity, 2-20 RPM Table Speed



VIEW OF ABB IRC5 ROBOT CONTROLS



ABB TWIN ROBOT MIG WELDING CELL



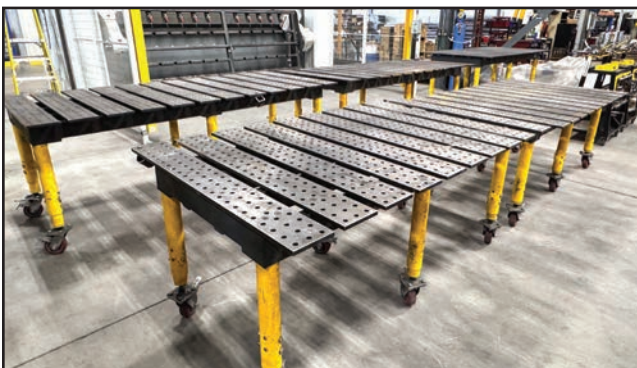
ABB IRBP K-600 FERRIS WHEEL POSITIONER



VIEW OF WELDERS



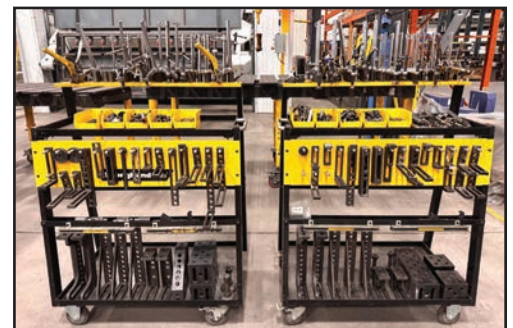
(2) LINCOLN POWERWAVE R450 MIG WELDERS



VIEW OF (5) BUILDPRO MAX SLOTTED MODULAR WELD TABLES



WULFTEC CIRCUMFERENTIAL TWIN MIG WELD SYSTEM



BUILDPRO FIXTURE COMPONENTS

WELDING DEPARTMENT, MISC. MACHINERY



BLUCO WELDING FIXTURES & CLAMPS



VIEW OF WELDING SUPPLIES



CAMFIL FARR FUME EXTRACTION SYSTEM



2022 PLYMOVENT DUAL BOOM FUME EXTRACTION ARMS



STRONG HAND TOOLS
TU52020 WELDING
MANIPULATOR



(2) PLYMOVENT MOBILE PRO PORTABLE
FUME FILTERS

MISC. MACHINERY

2018 MACRO PROSPERITY MACRO 70 HYDRAULIC IRONWORKER, s/n 156699, 70 Ton Capacity, 1" x 0.75" Punch, 12" x 0.75" Shear, 5.19" x 5.19" x 0.5" Angle

HYD-MECH S-20PE 13" X 18" HORIZONTAL BAND SAW, s/n 40389127

FMB 250SA HORIZONTAL BAND SAW, s/n 91227

AINSI TC820 TAPPING ARM, w/ (2) Tap Collet Sets, 6" x 14" Magnetic Chuck, Mounted on 48" x 48" Steel Table

KING PDM-30 MILLING & DRILLING MACHINE, s/n 633550, 8" x 28.5" Table, 2 HP, 125-2500 RPM Spindle Speed

ERLO TCA 50 GEARED HEAD DRILL, s/n 8950, 16.5" x 16.5" Table, 45-1115 Spindle RPM

ERLO TCA 45 GEARED HEAD DRILL, s/n 1014/172, 17.5" x 14.5" Table, 68-1270 Spindle RPM

ALSO: Unknown Make H-Frame Shop Press, Approx. 20 Ton, 10 HP Motor; KING CANADA KC-1090 10" Bench Grinder; KING INDUSTRIAL KC-760L 6" x 48" Belt/9" Disc Sander



(2) BUILDPRO ROTARY
WELDING POSITIONERS



HYD-MECH S-20PE 13" X 18" HORIZONTAL BAND SAW



MACRO PROSPERITY 70 TON
HYDRAULIC IRONWORKER



AINSI TC820 TAPPING ARM



VIEW OF KING PDM-30 & ERLO TCA 50
DRILLS



ERLO TCA 45 GEARED HEAD DRILL

FACTORY SUPPORT EQUIPMENT

FACTORY SUPPORT EQUIPMENT

- 2020 INGERSOLL RAND RS37I 50 HP VARIABLE SPEED AIR COMPRESSOR, s/n CBV537724
- 2021 ATLAS COPCO GA37 50 HP AIR COMPRESSOR, s/n AP1589689, 12,174 Hours (At Time of Print)
- 2020 ATLAS COPCO GA37VSD+ 50 HP VARIABLE SPEED AIR COMPRESSOR, s/n AP1842381, 14,641 Hours (At Time of Print)
- 2022 ATLAS COPCO GA15FF 20 HP AIR COMPRESSOR, s/n ITJ593150, 20,809 Hours (At Time of Print)
- INGERSOLL RAND T30 15 HP 2-STAGE RECIPROCATING AIR COMPRESSOR W/ 7100 BARE PUMP, s/n 1046685, Mounted on 120 Gallon Tank
- 2021 ATLAS COPCO FD310VFD-A AIR DRYER, s/n ITJ451362
- SKYJACK SJ3226 SCISSOR LIFT, s/n 272960, 26' Max. Platform Height, 500 lb./2 Person Capacity
- 2023 TENNANT T7 ELECTRIC RIDE-ON FLOOR SCRUBBER, s/n T7-11054501
- SWEED SCRAP CHOPPER
- (42) SECTIONS OF ADJUSTABLE PALLET RACKING
- SFDC Z-MARKING-12050 PNEUMATIC DOT PEEN MARKER, w/ Touch Type Controller
- (2) PORTACOOL JETSTREAM 270 PORTABLE COOLING FANS, s/n 22334023147110, 22334023147111



2020
INGERSOLL RAND RS37I 50 HP VARI-SPEED AIR COMPRESSOR



2021
ATLAS COPCO GA37 50 HP AIR COMPRESSOR



2020
ATLAS COPCO GA37VSD+ 50 HP VARI-SPEED AIR COMPRESSOR



2021
ATLAS COPCO FD310VFD-A AIR DRYER



2023
TENNANT T7 ELECTRIC RIDE-ON FLOOR SCRUBBER



2022
ATLAS COPCO GA15FF 20 HP AIR COMPRESSOR



INGERSOLL RAND 15 HP AIR COMPRESSOR



SKYJACK SJ3226 SCISSOR LIFT



(1 OF 2) PORTACOOL JETSTREAM 270 FAN



SFDC Z-MARKING-12050 PNEUMATIC DOT PEEN MARKER



VIEW OF ADJUSTABLE PALLET RACKING



VIEW OF SUPPORT EQUIPMENT



FORKLIFTS, BRIDGE CRANES

FORKLIFTS

2021 COMBILIFT CBE6000 6,000 LB. ELECTRIC MULTI-DIRECTIONAL FORKLIFT, s/n 60630, w/ Side Shifter, Fork Positioner, 3-Stage Mast, 157" Max. Lift Height

2021 AISLE MASTER 33NE 3,300 LB. ELECTRIC ARTICULATING FORKLIFT, s/n 60631, w/ VNA (Very Narrow Aisle) Operation, Side Shifter, Fork Positioner, 3-Stage Mast, 244" Max. Lift Height

CATERPILLAR GP55N1 12,000 LB. LPG FORKLIFT, s/n AT33C90047 w/ Side Shifter, 119" Max. Lift Height

HYSTER E50XL 4,800 LB. ELECTRIC FORKLIFT, s/n C108V20567R, w/ Side Shifter, 3-Stage Mast, 189" Max. Lift Height

2021 COMBILIFT COMBI-CS 2,200 LB. ELECTRIC REACH STACKER, s/n 60632



2,200 LB CAP.
2021 COMBILIFT ELECTRIC REACH STACKER



4,800 LB CAP.
HYSTER E50XL ELECTRIC FORKLIFT



12,000 LB CAP.
CATERPILLAR GP55N1 LPG FORKLIFT



2021
6,000 LB CAP.
COMBILIFT ELEC. MULTI-DIRECTIONAL FORKLIFT



2021
3,300 LB CAP.
AISLE MASTER ELEC. ARTICULATING FORKLIFT

BRIDGE CRANES

2021 FRONTENAC 40' X 200' FREE-STANDING TOP RUNNING BRIDGE CRANE SYSTEM, Comprised of (2) 2.5 Ton Single Girder Bridges w/ STAHL Electric Hoists, Radio Controls, Uprights, Runways & Buss, Project FT20-296

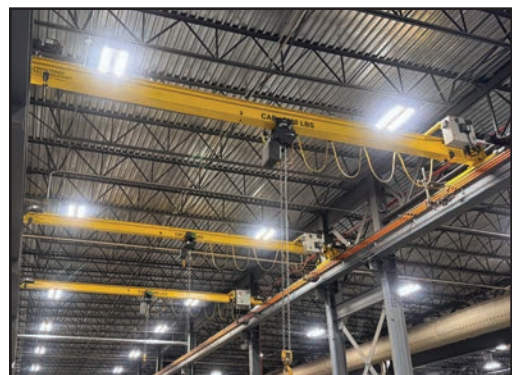
2021 FRONTENAC TRI-BRIDGE CRANE SYSTEM, Comprised of (1) 5-Ton Single Girder Top Running Bridge w/ STAHL Electric Hoist, (2) 1-Ton Single Girder Top-Running Bridges w/ STAHL Electric Hoists, Radio Controls, Approx. 26' Span x 175' Runway

2021 FRONTENAC 1-TON SINGLE GIRDER TOP RUNNING BRIDGE CRANE, s/n 3133293, Approx. 30' Span x 175' Runway, STAHL 1 Ton Electric Hoist, Radio Control, Project FT20-298

2022 FRONTENAC 500 LB. PORTABLE FREE-STANDING JIB CRANE, s/n na, 12' Under Rail x 7' Reach, w/ KITO 500 lb. Electric Hoist



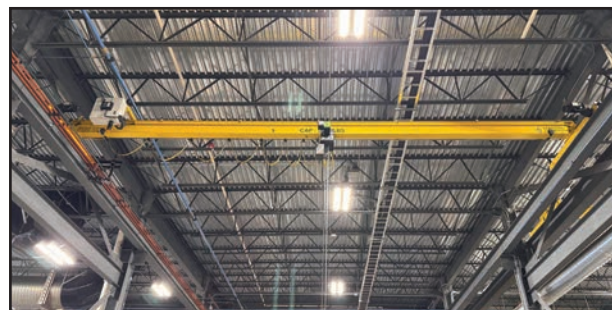
2021
FRONTENAC 40' X 200' FREE-STANDING CRANE SYSTEM



2021 FRONTENAC TRI-BRIDGE CRANE SYSTEM



2022 FRONTENAC 500 LB. PORTABLE FREE-STANDING JIB CRANE



2021 FRONTENAC 1-TON SINGLE GIRDER TOP RUNNING BRIDGE CRANE

VEHICLES, OFFICE

VEHICLES

2023 AUDI E-TRON TECHNIK 55 QUATTRO S-LINE EV SUV, VIN: WA1VAAGE5PB024698, Leather, 12.3" Touchscreen Infotainment w/ Apple CarPlay, Android, Bluetooth, Satellite Radio, Hard Drive, Voice Activation System, (2) Keys, 96,544 km

2020 GMC AT4 SIERRA 1500 SUPER CREW PICKUP, VIN: 1GTU9EET5LZ359562, Duramax Turbo Diesel, Leather Seats, Apple Car Play, Android, Bluetooth, Satellite Radio, Hard Drive, (2) Keys, Full Sets of Rims & Tires for Summer and Winter, 80,596 km

OFFICE

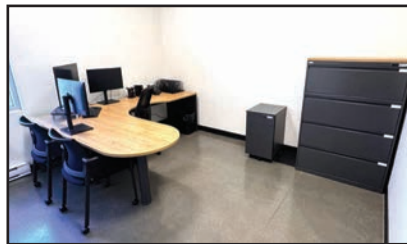
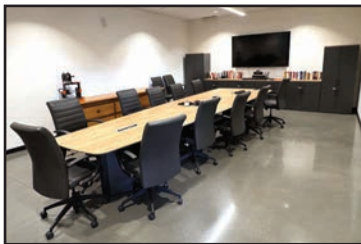
COMPLETE MODERN OFFICE AREA Including Conference Rooms, Offices, Cubicles, Laptop Computers, Desktop Computers, Flat Screens Monitors, Printers, Break Rooms, Kitchen Appliances, TV's, and More



2023 AUDI E-TRON TECHNIK 55 QUATTRO S-LINE EV SUV



GMC AT4 SIERRA 1500 SUPER CREW PICKUP



VIEW OF OFFICE FURNITURE

For auction inquiries, please contact Jennifer Reiner at (847) 545-6374 or jennifer@perfectionindustrial.com



Bidding Available Through
BidSpotter

View our current auction schedule at www.perfectionindustrial.com

SALE CLOSING

Tuesday, July 14, at 11 AM ET

ASSET LOCATION

66 Unifix Street
Bromont, QC J2L 1N6, Canada

INSPECTION

Monday, July 13, from 8:30 AM to 4:30 PM ET, or by appointment

REMOVAL

All purchased items must be removed by Friday, August 7, with the exception of the Gema/Trimac powder coat system which must be removed by Friday, August 21. All removal is strictly on an appointment only basis. Anyone removing purchased items with a lift truck or another powered vehicle must have a certificate of insurance with a \$2M General Liability policy, the policy must include a Worker's Compensation rider, and that certificate of insurance must be provided to the auctioneer for review and approval prior to the auction.

TERMS OF SALE

Auction conducted in U.S. Funds. An 18% Buyer's Premium will be charged on all assets purchased by buyers providing full payment is made within 48 hours following the sale. Acceptable forms of payment are cashier's check, company check (with bank letter of guarantee) or wire transfer within 48 hours of the sale close. For any Buyers failing to pay within the 48 hour stated payment period, the Buyer's Premium will be increased to 20%. All invoices paid with a credit card are subject to a 20% Buyer's Premium, and credit card payments are only allowed up to a maximum of \$2,000 per auction. Everything will be sold to the highest bidder, in accordance with the Auctioneer's customary "Terms of Sale", copies of which will be posted on the Auctioneer's website and subject to additional terms announced the day of sale. All items are sold "As is, Where is" without any warranty, express or implied.

FURTHER INFORMATION

For auction inquiries, please contact Jennifer Reiner at (847) 545-6374 or jennifer@perfectionindustrial.com.

View our current auction schedule at www.perfectionindustrial.com