

ONLINE AUCTION

Surplus to Ongoing
Operations of

 **Reliance**

**Late Model Tube & Pipe
Fabrication Assets**

SALE CLOSING

Thursday, April 2, at 10 AM CT

MAIN ASSET LOCATION

202 Industrial Dr
New Haven, MO 63068

INSPECTION

Wednesday, April 1, from 9 AM to
4 PM CT, or by appointment

**PRE-AUCTION
OFFERS INVITED
ON MAJOR ASSETS**

COMPLETE CATALOG & INFORMATION:

<https://perfection.global/7964>



CNC ROBOTIC TUBE BENDING CELL



TRENNJAEGER TUS425DGA AUTOMATIC STEEL CIRCULAR SAW

FEATURING: 2024 TRENNJAEGER TUS425DGA CNC CIRCULAR SAW, 2017 BLM ELECT130 CNC ELECTRIC BENDER, 2010 BLM ELECT80 CNC ELECTRIC BENDER, 2012 BLM ELECT63 CNC ELECTRIC BENDER, 2021 HMT CNC50TBRE CNC HYBRID BENDER, 2022 HMT CNC38MRE CNC HYBRID TUBE BENDER, 2022 YASKAWA ROBOT, TUBE SUPPORT EQUIP., MAZAK VTC-200C VMC, 2014 AKIRA SEIKI V4XP VMC, KOMATSU, NEFF & BECKWOOD PRESSES, 2023 HUBTEX 6,600 LB. SIDELoader, 2015 JCB 35DTCR T4 TELEHANDLER FORKLIFT, FORKLIFTS UP TO 8,000 LB. CAP., MILLER & LINCOLN WELDERS, FACTORY SUPPORT EQUIPMENT, AND MORE



Perfection Industrial Sales
ph +1-847-545-6374 • fax +1-847-427-8884
www.perfectionindustrial.com

Bidding Available Through
BidSpotter

SAWS

2024 TRENNJAEGER TUS425DGA AUTOMATIC STEEL CIRCULAR SAW, s/n 7203516, w/INTE Comp. Touch Control, 16.7" Saw Blade Ø, 42-688 FPM, 5.3 HP, Infinitely Variable Cutting Speed, Adjustable Vertical Vises, Clamping Base Plate, Chip Drawer

(2) OLIVER 879 PLATE SAWS, s/n 200501, 205432, 154" x 6-1/4" Capacity, 154" Distance Between Housings, 23" Saw Blade Ø, 72" Gauge Table w/ Vise Sets, Chip Collection System, Operations Control, (Location: Wyoming, MI)

OLIVER 849 PLATE SAW, s/n 204679, 144" Distance Between Housings, 145" x 2-1/4" Capacity, 70 RPM Saw Speed, 72" Gauge Table, 72" Feed Table, Chip Collection System, (Location: Wyoming, MI)

KASTO KASTOBBS A 3X30 AUTOMATIC HORIZONTAL PLATE SAW, s/n 6335 102 00, Approx. 120" x 14.2" Manual Capacity, 14.2" Cutting Height Including BC, 39-393 FPM Sawband Speed, 10 HP Saw Motor, 40.2 HP Total Power, Automatic Hydraulic Cutting Feed, Hydraulic Plate Clamping, 77" Distance from Table to Floor, (Location: Schaumburg, IL)

KASTO KASTOTEC A5 AUTOMATIC HORIZONTAL BANDSAW, s/n 6610 102 037, 20.8"H x 24.8"W Rectangle Cutting Range, 20.8" Ø Round Cutting Range, 0.2" Min. Cutting Length, Roller Conveyor, (Located: Schaumburg, IL)

AMADA H1080 HORIZONTAL BANDSAW, s/n 750521, 40" x 40" Capacity, 3" Blade Width, 45" x 120" Motorized Infeed Conveyor, Variable Blade Speed, Hydraulic Shuttle Vise w/ Programmable Control, (Location: Wyoming, MI)

2011 AMADA H-550E II HORIZONTAL BANDSAW, s/n 5590 0149, 7.8"-18.9" Round Capacity, 21.7"W x 18.9"H Rectangle Capacity, 16'L x .050"T x 1.5"W Blade Size, Chip Conveyor, Variable Blade Speed Drive, Blade Hour Meter, Remote Blade Guide Control, Blade Deviation Monitor, Cutting Rate Display, (Location: Wyoming, MI)

SOCO FA-111NC COLD SAW, s/n na, w/ V-Type Clamping Jaw, 127mm Tube/100mm Solid Bar Capacity, Flex Grip Feed, Vertical Slide, 15' Bundle Loader

ALSO: CLAUSING STARTRITE V900H Vertical Bandsaw, s/n 152180, w/ 36" Throat, 27-3/4" x 26" Table, Ideal Blade Welder; **STARTRITE 316H** Vertical Bandsaw, s/n 88091, 36" Throat, 27-3/4" x 26" Table; **ENCO 01712017** Vertical Bandsaw, s/n B452230, w/ 20" x 23-1/2" Table, 18" Throat, Blade Welder; **ROCKWELL 28-500** Vertical Bandsaw, s/n 1341507, w/ 24-1/4" x 24-1/4" Table, 20" Throat; **KALAMAZOO H9AD** Horizontal Bandsaw, s/n 8118; **KASTO GKS400 AU/1200** Semi-Automatic Cold Saw, s/n 1031243152/80024; **KASTO GKS400U** Semi-Automatic Cold Saw, s/n 1043243110; **BEWO 350LT/PK/RD** Cold Saw, s/n 30810695; **SCOTCHMAN 350LT/PK** Cold Saw, s/n B106240616; **SIMMONS SIMCUT S180** Aluminum Saw, s/n 1108; **SIMMONS SIMCUT** Aluminum Saw, s/n na, 14" Blade



2024

TRENNJAEGER TUS425DGA AUTOMATIC STEEL CIRCULAR SAW



KASTO KASTOBBS A 3X30 AUTOMATIC HORIZONTAL PLATE SAW



1 OF 2 OLIVER 879 PLATE SAW



1 OF 2 OLIVER 879 PLATE SAW



OLIVER 849 PLATE SAW



KASTO KASTOTEC A5 AUTO. HORIZONTAL BANDSAW

**PRE-AUCTION
OFFERS INVITED
ON MAJOR
ASSETS**

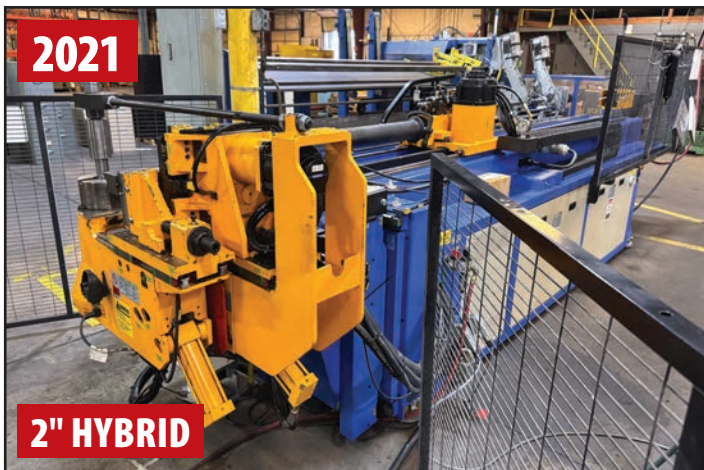
SAW, LATE MODEL CNC TUBE BENDER CELL

LATE MODEL CNC TUBE BENDER CELL

LATE MODEL TUBE BENDING CELL, Comprised of 2021 HMT CNC50TBRE 2" Hybrid CNC Tube Bender, s/n 210904 1162B, w/ BendPro G2 Control, 5-Axis, Multi-Stack, 2022 YASKAWA YR-1-06VX88-A00 6-Axis Robot, s/n R21201-063-2, w/ 88 kg Payload, YRC-1000 Control w/ Pendant, BENDER BUTLER Loading System, (Cell to be Offered by Component)



TUBE BENDING CELL - YASKAWA YR-1-06VX88-A00 6-AXIS ROBOT



TUBE BENDING CELL - HMT CNC50TBRE HYBRID CNC TUBE BENDER



2011 AMADA H-550E II HORIZONTAL BANDSAW



CLAUSING STARTRITE V900H VERTICAL BANDSAW



AMADA H1080 HORIZONTAL BANDSAW



SOCO FA-111NC COLD SAW



BLM ELECT130 5" CNC ELECTRIC TUBE BENDER



2010 BLM ELECT80 3" CNC ELECTRIC TUBE BENDER



2012 BLM ELECT63 2.5" CNC ELECTRIC TUBE BENDER

TUBE BENDERS, TUBE SUPPORT EQUIPMENT

TUBE BENDERS

2017 BLM ELECT130 5" CNC ELECTRIC TUBE BENDER, s/n 652170500004, w/ SIEMENS SIMATIC HMI Control, 5"Ø x 0.1" Wall Round Tube Bending Max. Capacity, 12 Axes, RH or LH Bending, Multi-Stack

2010 BLM ELECT80 3" CNC ELECTRIC TUBE BENDER, s/n 6501003000004, w/ SIEMENS SIMATIC Panel PC Control, 3.15" Ø x 0.16" Wall Round Tube Bending Max. Capacity, 9 Axes, RH or LH Convertible Bending, Multi-Stack

2012 BLM ELECT63 2.5" CNC ELECTRIC TUBE BENDER, s/n 6501205000020, w/ SIEMENS SIMATIC Panel PC Control, 2.5" Ø x 0.8" Wall Round Tube Bending Max. Capacity, 9 Axes, RH or LH Convertible Bending, Multi-Stack

EATON LEONARD EL300 3" CNC HYDRAULIC TUBE BENDER, s/n na, w/ BendPro G2 Control

2021 HMT CNC50TBRE 2" HYBRID CNC TUBE BENDER, s/n 210904 1162B, w/ BendPro G2 Control, 5-Axis, Multi-Stack

2014 HMT CNC50TSR 2" CNC HYDRAULIC TUBE BENDER, s/n 140717 815B, w/ 3-Axis, Single Stack

EATON LEONARD VB200 HP LH 2" CNC HYDRAULIC TUBE BENDER, s/n 103 IPC 0297, w/ EL Premium Control

2022 HMT CNC38MRE CNC 1.5" HYBRID TUBE BENDER, s/n 221109 1224B, 5-Axis, Multi-Stack

CRITERION TM25 1.5" TWIN HEAD TUBE BENDER, s/n na, w/ ALLEN BRADLEY PanelView 550 PLC Control

PINES VERTICAL TUBE BENDER, s/n 44362-69360, w/ Pines Digital Dial-a-Bend Control

ALSO: Large Selection of Tube Bender Tooling for Each Bender



3" CNC
EATON LEONARD EL300 3" CNC HYDRAULIC TUBE BENDER



2" CNC
2014 HMT CNC50TSR 2" CNC HYDRAULIC TUBE BENDER



2" CNC
EATON LEONARD VB200 HP LH 2" CNC HYDRAULIC TUBE BENDER



1.5" HYBRID
2022 HMT CNC38MRE CNC 1.5" HYBRID TUBE BENDER



1"
PINES VERTICAL TUBE BENDER



VIEW OF TUBE BENDER TOOLING

TUBE SUPPORT EQUIPMENT

2020 SOCO DEF-FA/52 TUBE CHAMFERING MACHINE, s/n 0220DEF52D012, 0.59" - 2.05" OD, 0.118" Max. Wall Thickness, 39.4" Standard Length, 78.7" Extended Workpiece Length, 1,390 - 2,590 RPM, 2 HP x 4P Spindle Motor, AX1N-40MR-ES PLC (Location: Portland, OR)

HAVEN 871 DUAL BLADE SHEAR CUT-OFF, s/n 2649, 0.187"-1.5" Tube O.D. Size Range, w/ 20' Infeed, Assorted Tooling

2005 KENT BURRMASER BM2-120RH-1 DEBURRER, s/n 10300/TUB-DEB-1, 1/2"-4" Rounds, 1/2"-3" Square, .025"-.187" Gauge

2021 KENT BURRMASER BM2-65BC DEBURRER, s/n 10825, Approx. 1/2"-4" Rounds, 1/2"-3" Square, 65" Max Length

KENT BURRMASER 1-3050 DEBURRER, s/n 10211 (Location: Plainfield, IN)

RAND BRIGHT BH-50 THRU-FEED BELT TYPE CENTERLESS DEBURRER, s/n 1185-2479

(3) ACCU BURR DEBURRERS

(2) FENN NO. 3F ROTARY SWAGERS, s/n 761, 752

MANCHESTER TOOL & DIE M71H6 TUBE END FORMER, s/n 0203-0386S, 20 HP



2020
SOCO DEF-FA/52 TUBE CHAMFERING MACHINE



2 AVAILABLE
FENN NO. 3F ROTARY SWAGER



HAVEN 871 DUAL BLADE SHEAR CUT-OFF



KENT BURRMASER BM2-120RH-1 DEBURRER



KENT BURRMASER BM2-65BC DEBURRER

VMC'S, CNC ROUTER, SURFACE GRINDERS, MISC. MACHINERY

VERTICAL MACHINING CENTERS

2006 MAZAK VTC-200C VERTICAL MACHINING CENTER, s/n 184338, w/ MAZATROL 640mn Control, X-65", Y-20.1", Z-20.08", CAT 40 Spindle Taper, 12,000 RPM Max Spindle Speed, 24-ATC, 77.5" x 20" Table, 1,760 lb. Table Capacity

2014 AKIRA SEIKI V4XP VERTICAL MACHINING CENTER, s/n PV10140500, w/ Mi645 Control, X-41.3", Y-19.8", Z-22", BT40 Spindle Taper, 12,000 RPM Max Spindle Speed, 28-ATC, 19" x 47" Table

BRIDGEPORT DISCOVERY TORQ-CUT 22 VERTICAL MACHINING CENTER, s/n na, w/ DX-32 Control, X-22", Y-16", Z-20", BT-40 Spindle Taper, 6,000 RPM Spindle Speed, 22-ATC, 14" x 33" Table



BRIDGEPORT DISCOVERY TORQ-CUT 22 VMC

CNC ROUTER

2011 CR ONSRUD 148D25H2 CNC ROUTER, s/n148C110301, w/ OSAI Series 10/510i Control, X-148", Y-61", Z-11", 14" Under Bridge Clearance, HSK-63 Spindle Taper, 24,000 RPM Max Main Spindle Speed, 18,000 RPM Max Secondary Spindle Speed, (2) 12-ATC, (2) Independent Tables, 61" x 97" & 61" x 49", Hi-Torque Milling and Tapping on Secondary Spindle, Multi-Head Dual Process of Spindles, Four Pile Spindle Upgrade, (Location: Plainfield, IN)



2006 MAZAK VTC-200C VMC



AKIRA SEIKI V4XP VMC

SURFACE GRINDERS

MATTISON 60 ROTARY SURFACE GRINDER, s/n na, w/ 84" Magnetic Chuck, 160 HP, (Location: Rockford, IL)

MATTISON 54" ROTARY SURFACE GRINDER, s/n 48 599, w/ 54" Chuck, 100 HP, (Location: Rockford, IL)

ACER 1224AHD AUTOMATIC SURFACE GRINDER, s/n 948859015

ACER 618M SURFACE GRINDER, s/n 958811050



ACER 618M SURFACE GRINDER

MISC. MACHINERY

ROMI-BRIDGEPORT EZ PATH CNC LATHE, s/n 002-078320-325, w/ 16-1/2" Swing, 40" Centers, 8" 4-Jaw Chuck, 8-Position Turret, 37-3000 RPM Spindle Speed

MAZAK MATE 14" X 40" ENGINE LATHE, s/n 55867, w/ 76-2000 RPM, 8" 3-Jaw Chuck, Dorian Quick Change Tool Post, Tailstock, Threading, 1-9/16" Hole Through Spindle, Anilam Wizard 100 2-Axis DRO

BRIDGEPORT EZ-TRACK SX MILLING MACHINE, s/n 150755, w/ 9" x 48" Power Feed Table, Rapid 8 Power Draw Bar



ACER 1224AHD AUTOMATIC SURFACE GRINDER



ROMI-BRIDGEPORT EZ PATH CNC LATHE

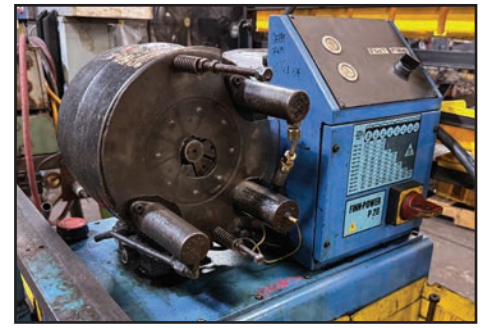


MAZAK MATE 14" X 40" ENGINE LATHE

MISC. MACHINERY, PRESSES, WELDING

MISC. MACHINERY (CON'T)

ALSO: FINN POWER CC22 Power Hose Crimper; FINN POWER P20 Hydraulic Hose Crimper; BUFFALO No. 18 Drill Press, s/n 70-1315; STANLEY BOSTITCH LC-2550-A Wire Stitcher, s/n LA-25179; MILFORD Riveter; (2) MILFORD 410 REV 3 Riveters, s/n 1007, 1006; TOWNSEND TEXTRON 007 Riveter, s/n 118; CHICAGO RIVET 41-C Riveter, s/n 990-375; CHICAGO RIVET 990 Riveter, s/n 526; BALDOR 8125W Pedestal Grinder, s/n F372, 3/4 HP, 2850/3450 RPM; MSC 20VS-ST Mill/Drill, s/n 1041239, 1.5 HP, 8" x 21-1/2" Table, 10" Throat; WILTON 5816 Drill Press, s/n na, 12-1/4" x 14-1/4" Table, 7" Throat, 3/4 HP; DOALL 5851 Drill Press, s/n 58-305, 15-1/4" x 12-1/4" 7-1/2" Throat, 3/4 HP; ORBIT OR-250I Drill Press, s/n na, 13-1/2" x 16" Table, 10" Throat, 1 HP; WILTON A5816 15" Drill Press, s/n 8011439, 14-1/2" x 11-1/4"; SEARS CRAFTSMAN Commercial 15" Drill Press, s/n na, 12" x 12" Table, 7.5" Throat, 3/4 HP; JAMES CLARK JR. ELECTRIC Pedestal Grinder, (3) BALDOR Pedestal Grinders, (2) BURR KING 562 1" Belt Sanders



FINN POWER P20 HYDRAULIC HOSE CRIMPER

PRESSES

CHICAGO DREIS & KRUMP SS400-48-144 400 TON STRAIGHT-SIDE DOUBLE CRANK PRESS, s/n na, 144" Between Housings, 134" Bed Length (L-R), 48" Stroke

KOMATSU OBS60S-VS-3 66 TON OBS PRESS, s/n D0066, w/ 42-85 SPM, 4.72" Slide Stroke, 11.81" Die Height, 2.76" Slide Adj., 19.69" x 15.75" Slide Area, 35.43" x 21.65" x 5.12" Bolster, Stroke Selector

KOMATSU OBS45S-VS-3 49.5 TON OBS PRESS, s/n 00077, w/ 50-100 SPM, 3.94" Slide Stroke, 9.84" Die Height, 2.36" Slide Adj., 15.75" x 13.78" Slide Area, 31.50" x 17.72" x 4.33" Bolster, Stroke Selector

BECKWOOD 50 TON C-FRAME HYDRAULIC PRESS, s/n 30881B

ROUSSELLE NO. 4W 40 TON GAP FRAME PRESS, s/n 21195, w/ 4" Stroke, 45 SPM, 3" Adj, 14" x 48" Bed

(2) ROUSSELLE NO. 4F 40 TON OBI PRESSES, s/n 13639, 15395

BLISS C45 35 TON OBI PRESS, s/n HP51055, w/ 2.5" Adj, 3" Stroke, 10-3/4" Shut Height, 16-3/4" x 26-1/2" Bed

BECKWOOD 30 TON HYDRAULIC 4-POST PRESS, s/n 26430-B, w/ 30" x 34" Bed & Ram

L & J NO. 27 PBI PRESS, s/n 35441, 27 Ton Capacity, 2-1/2" Stroke, 2" Adj, 9" Shut Height, 21-1/2" x 13" Bed

ALSO: NEFF PRESS, s/n 10143; NEFF 24 Ton Hydraulic C-Frame Press, s/n 9287, 3.5" Cylinder Dia; NEFF 22 Ton Hydraulic Press, s/n P9570, 3.5" Cylinder Dia; MINSTER No. 3 OBI Press, s/n na, 22 Ton Capacity, 12" x 20" Bed; (2) L & J No. 2 OBI Presses, s/n 22855, 22774, 18 Ton Capacity, 3" Stroke, 2" Adj, 10-1/2" Shut Height, 18" x 11-1/2" Bed; L & J No. 2 OBI Press, s/n 22717, 18 Ton Capacity, 2" Stroke, 2" Adj, 7-1/2" Shut Height, 18" x 11-1/2" Bed; L & J No. 2S OBI Press, s/n 22379, 16 Ton, 2" Stroke, 2" Adj, 11-1/2" Shut Height, 18" x 11-1/2" Bed; (2) NEFF D12-5M Hydraulic C-Frame Press, s/n 10701, 10071, 12 Ton Capacity, 7" Throat, 7" Stroke, 3.25" Cylinder Dia; (2) ALVA ALLEN BT8 Punch Presses, s/n CJG63843 & MGH57243, 8 Ton Capacity



BRIDGEPORT EZ-TRACK SX MILLING MACHINE



FINN POWER CC22 POWER HOSE CRIMPER



KOMATSU OBS60S-VS-3 OBS PRESS



KOMATSU OBS45S-VS-3 OBS PRESS

WELDING

(3) LINCOLN PRECISION TIG 275 WELDERS, s/n U1031026092, U1030609271, U1031026082

MILLER PULSTAR 450 MIG WELDER, s/n JK606605

MILLER DELTAWELD 452 MIG WELDER, s/n LA059476

(4) MILLER DELTAWELD 451 MIG WELDERS, s/n KC290898, KA848384, KA848383, KC287862, w/ MILLER 22A Series Wire Feeds

LINCOLN POWER MIG 300 WELDER, s/n U1031100784

COBRA TIG-150 PORTABLE ORBITAL TUBE WELDER, s/n 13030090

(2) PRO WELD CD-312 STUD WELDERS, s/n 322.058.0811 & 322.1407.752



(3) LINCOLN PRECISION TIG 275 WELDERS



CHICAGO D&K SS400-48-144 STRAIGHT-SIDE DOUBLE CRANK PRESS

FORKLIFTS & MOBILE EQUIPMENT

FORKLIFTS & MOBILE EQUIPMENT

2015 JCB 35D TELETRUK 7,700 LB. DIESEL TELESCOPIC FORKLIFT, s/n 289, w/ Fork Positioners, 494 Hours, 173.2" Max Lift Height, 195.8" Extended Boom Height, 89.7" Max Outreach, 95.6" Max Horizontal Extension at COG, Pneumatic Tires

2023 HUBTEX MSU 30 SERIES 2240-S 6,600 LB. ELECTRIC MULTIDIRECTIONAL SIDeloader, s/n 70.223, 325 Hours, 190" Rated Lift Height, (4) Forks

CATERPILLAR T80DSTR 8,000 LB. LP FORKLIFT, s/n 5KB02708, 196.5" 3-Stage Mast, Side Shift

CATERPILLAR GC25 5,000 LB. LP FORKLIFT, s/n 4EM09590, 190" 3-Stage Mast, Side Shift

MITSUBISHI FGC20N 4,000 LB. LP FORKLIFT, s/n AF82F31873, 187" 3-Stage Mast, Side Shift, 42" Fork Length

CATERPILLAR GC18K 2,800 LB. LP FORKLIFT, s/n AT81D00748, 188" 3-Stage Mast, Side Shift, 42" Fork Length

2005 BRODERSON IC-200-2F 15 TON CARRY DECK CRANE, s/n 143483, 36'2" Horizontal Reach, 45' Vertical Reach, 3-Section Hydraulic Extended Boom, 2-Wheel Drive, (Note: Requires Repair) (Location: Rockford, IL)

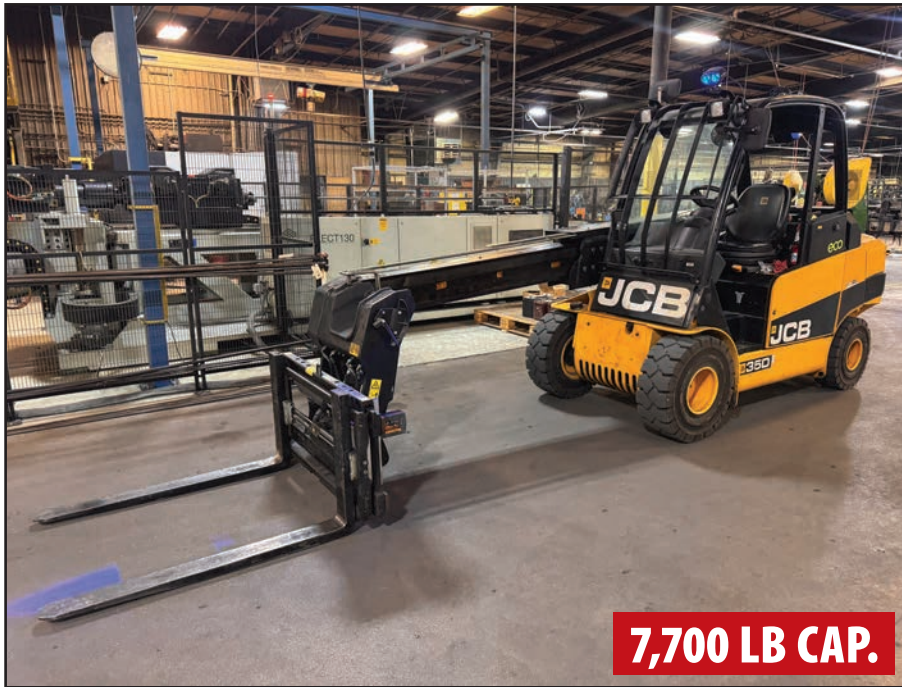
JLG 2646E SCISSOR LIFT, s/n 0200027843, w/ 26' Max Platform Height, 500 lb. Capacity

(2) GREAT DANE 53' ENCLOSED TRAILERS

(3) 53' ENCLOSED TRAILERS



JLG 2646E SCISSOR LIFT



7,700 LB CAP.

2015 JCB 35D TELETRUK DIESEL TELESCOPIC FORKLIFT



6,600 LB CAP.

2023 HUBTEX ELECTRIC MULTIDIRECTIONAL SIDeloader



8,000 LB CAP.

CATERPILLAR T80DSTR LP FORKLIFT



5,000 LB CAP.

CATERPILLAR GC25 LP FORKLIFT



15 TON

BRODERSON IC-200-2F CARRY DECK CRANE

PLANT SUPPORT

PLANT SUPPORT

INGERSOLL RAND RS371I 50 HP ROTARY SCREW AIR COMPRESSOR, s/n CBV811808, w/ 125 PSIG Max Pressure

GARDNER DENVER EDE99K04 50 HP ROTARY SCREW AIR COMPRESSOR, s/n S058899, w/ 125 PSIG

GARDNER DENVER EDE99M03 50 HP ROTARY SCREW AIR COMPRESSOR, s/n S084282, w/ 100 PSIG

INGERSOLL RAND NVC300A40N REFRIGERATE AIR DRYER, s/n 522222

INGERSOLL RAND NVC200A40N REFRIGERATED AIR DRYER, s/n 529231

(3) 200 GALLON AIR TANKS

INTERNATIONAL PACKAGING MACHINES UNI-TENSION 55 SERIES STRETCH WRAPPER, s/n na

ALSO: OSTER 792A-LE Pipe Threader, s/n 0-140; **RIDGID No. 300 Pipe Threader**, s/n 7576853; **DEWALT DW718 12" Double Bevel Sliding Compound Miter Saw**; Toolboxes; Power Tools; Pneumatic Tools; Hand Tools; Ladders; Machine Vises; CAT 40 Tool Holders; BT40 Tool Holders; Perishable Tooling; Large Assortment of Collapsible Crates; Cantilever Racks; Pallet Racks; Air Hose Reels; Electrical Reels; Maintenance Crib; Work Benches; Banding Carts; and Much More



INGERSOLL RAND RS371I 50 HP AIR COMPRESSOR



VIEW OF HEAVY DUTY CANTILEVER RACKING



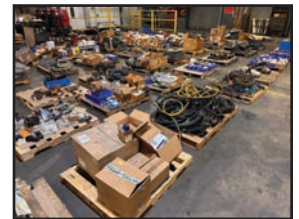
GARDNER DENVER EDE99K04 50 HP AIR COMPRESSOR



INGERSOLL RAND NVC300A40N REFRIGERATE AIR DRYER



VIEW OF COLLAPSABLE TOTE BASKETS



VIEW OF CONSUMABLE SUPPLIES

For auction inquiries, please contact Jennifer Reiner at (847) 545-6374 or jennifer@perfectionindustrial.com

View our current auction schedule at www.perfectionindustrial.com

SALE CLOSING

Thursday, April 2, at 10 AM CT

MAIN ASSET LOCATION

202 Industrial Dr
New Haven, MO 63068

INSPECTION

Wednesday, April 1, from 9 AM to 4 PM CT, or by appointment

REMOVAL

All items must be removed by Friday, April 17. All removal is strictly on an appointment only basis. Anyone removing purchased items with a lift truck or another powered vehicle must have a certificate of insurance with a \$2M General Liability policy, the policy must include a Worker's Compensation rider, and that certificate of insurance must be provided to the auctioneer for review and approval prior to the auction.

TERMS OF SALE

An 18% Buyer's Premium will be charged on all assets purchased by buyers providing full payment is made within 48 hours following the sale. Acceptable forms of payment are cashier's check, company check (with bank letter of guarantee) or wire transfer within 48 hours of the sale close. For any Buyers failing to pay within the 48 hour stated payment period, the Buyer's Premium will be increased to 20%. All invoices paid with a credit card are subject to a 20% Buyer's Premium, and credit card payments are only allowed up to a maximum of \$2,000 per auction. Everything will be sold to the highest bidder, in accordance with the Auctioneer's customary "Terms of Sale", copies of which will be posted on the Auctioneer's website and subject to additional terms announced the day of sale. All items are sold "As is, Where is" without any warranty, express or implied.

FURTHER INFORMATION

For auction inquiries, please contact Jennifer Reiner at (847) 545-6374 or jennifer@perfectionindustrial.com.



Bidding Available Through
BidSpotter